


GIFTS THAT
Grow a Generation

ANNUAL REPORT FOR FISCAL YEAR 2019 | JULY 1, 2018 - JUNE 30, 2019



CATHOLIC COMMUNITY FOUNDATION
ARCHDIOCESE OF BALTIMORE
Share Your Blessings. Sustain Our Faith.



Overview

The Catholic Community Foundation: <i>A Dynamic Force for Catholic Philanthropy</i>	1
Welcome from Archbishop Lori	2
Letter from the Foundation President	3

Financials

Grant Distributions	4
Year-in-Review	6
Performance Review	7
Selected Financial Information	8

Endowments

<i>Gifts that Grow a Generation</i>	10
New Endowment Funds	14
Endowment Funds by Purpose	15

Donor Advised Funds	27
----------------------------	----

Legacy League	28
----------------------	----

About The Foundation

Foundation Leadership	31
Contact Us	32



The Catholic Community Foundation:

*A Dynamic Force
for Catholic Philanthropy*

Catholics who have reached certain milestones in their lives may be thinking about how to balance their needs and those of their families with the legacy they want to leave.

They might be thankful for the many blessings God has bestowed upon them and want to show gratitude. They may want to remember a loved one or pass along their philanthropic values to their family's next generations. They may want to ensure a thriving future for Catholic institutions, ministries, and programs that are close to their heart. Catholic Community Foundation endowment funds help our donors realize these goals.

Fund holders establish endowment funds with the Catholic Community Foundation because it is easy to do, guarantees long-term support for their beloved parish or school or cherished archdiocesan ministry, and because they know their gifts will be invested in accordance with Church teachings. They recognize the Foundation as the best option to maximize the potential beneficial impact of their endowed giving, secure in the knowledge that the beneficiaries of their gifts will realize a revenue stream in perpetuity and be better equipped to plan for their future.

Ultimately, philanthropists who partner with the Catholic Community Foundation do so because they have reached a watershed moment in their lives of stewardship, eager to nourish the spiritual community that has nourished and meant so much to them.



“Now more than ever, the importance and impact of the Catholic Community Foundation is evident, making your leadership and your generous support of this critical instrument of our local Church so valued and so appreciated.”

Dear Friends in Christ, I pray that you and your loved ones are safe and well during these difficult and uncertain times.

The spread of COVID-19 has impacted each of us in one way or another.

I invite you to join me in praying for those who are sick and for those who have lost their lives during this pandemic, and that our shared faith in the Living Christ, as it has so many times before in our Church's history, will bring us through this crisis together.

Now more than ever, the importance and impact of the Catholic Community Foundation is evident, making your leadership and your generous support of this critical instrument of our local Church so valued and so appreciated.

In recent months, we have seen both a dramatic increase in material needs, as well as a greater desire for spiritual nourishment from the faithful of our Archdiocese. The funds you have established in the Foundation, and the gifts you have made, will inform our Church's response to these needs for years to come.

Your endowed giving ensures that parishes, schools, and crucial outreach ministries will be there for people when they need their faith most and have nowhere else to turn. Moreover, in fortifying these vital tools of evangelization, you have advanced our Christ-given mission of making disciples by helping to form and prepare many who will lead our Church — both the laity and the ordained — in the years to come.

Thank you once more for partnering with the Catholic Community Foundation and for trusting us with your Christ-like kindness. Thanks to you, our Church will persevere though times of darkness and light, as together we trust in our loving and merciful God.

With grateful prayers for the continued safety and well-being of you and your loved ones, I am

Faithfully in Christ,



Most Reverend William E. Lori
Archbishop of Baltimore



Dear Friends, I am pleased to present you with the Catholic Community Foundation's Annual Report for Fiscal Year 2019 (July 1, 2018 – June 30, 2019), *Gifts that Grow a Generation*.

Due to generally favorable market conditions, the Foundation increased its assets under management to \$90.9 million in Fiscal Year 2019 (FY19). This growth enabled the Foundation to make distributions of over \$2.7 million, an infusion of resources that is invigorating archdiocesan parishes, schools, and a wide swath of programs crucial to the Church's ongoing mission.

Fifteen new funds were established in FY19 by benefactors who discerned a critical need and saw the Foundation as the optimal way to meet it. Some of these funds will provide scholarships to students of otherwise underserved families. Another will support young adults with special needs in their quest to find meaningful employment. Still another will benefit a Catholic School that seeks to assist school children with language-based differences. And yet another will lend a helping hand to the impoverished through funds supplementing a parish community's poor box. You can read more about these funds and those who established them in the pages that follow.

FY19 was my eighth year as President of the Foundation, a privilege I treasure as it affords me an opportunity to aid in setting a course for the Catholic community that has meant so much to me. I extend my utmost thanks to Chairman of the Foundation, Archbishop Lori, Executive Director, Pat Madden, and the Foundation's Board of Trustees and Committee members. Your devotion and your tireless efforts honor our fund holders' confidence in the Foundation's ability to secure and amplify the investments they have entrusted to us.

If you contributed in any way to the Catholic Community Foundation's success in FY19, please know we are thankful. If you would like to establish a new fund, or give to an existing one, please reach out to us by phone at 410-547-5356 or by visiting us at www.ccfmd.org.

John H. Balch
President

“Fifteen new funds were established in FY19 by benefactors who discerned a critical need and saw the Foundation as the optimal way to meet it.”



FINANCIALS

Grant Distributions

Over \$2.7 million in grant distributions were made in FY19, benefiting many Archdiocese of Baltimore's parishes, schools, ministries, and programs.

Below are a few highlights of how grant distributions in FY19 were used.

- Resurrection-St. Paul parish was able to financially assist a family experiencing an unexpected hardship, enabling them to keep their child enrolled in Resurrection-St. Paul School
- St. Vincent de Paul of Baltimore used its distribution to assist in its mission of providing Baltimore families with the skills and resources they need to attain financial stability and self-sufficiency
- Shrine of the Sacred Heart parish's educational, liturgical, and formational ministries were augmented
- Our Lady of the Fields enhanced its parish cemetery with a sidewalk and handrail to the Columbarium, increasing access for those in wheelchairs, and with markers that enable easier navigation to gravesites for everyone
- Priestly candidates at Mount St. Mary's Seminary were supported in their seminarian formation
- New furniture and fixtures were purchased by Notre Dame Preparatory School, increasing classroom functionality
- Without undue worry from an unexpected expense, Our Lady of Perpetual Help was able to repair its Parish Center's main boiler which serves the parish and school

For more information on Catholic Community Foundation distributions, please call us at 410-547-5356.



Photos this page courtesy of Mount St. Mary's Seminary and Resurrection-St. Paul School

\$2,727,780

Total distributions made
in Fiscal Year 2019

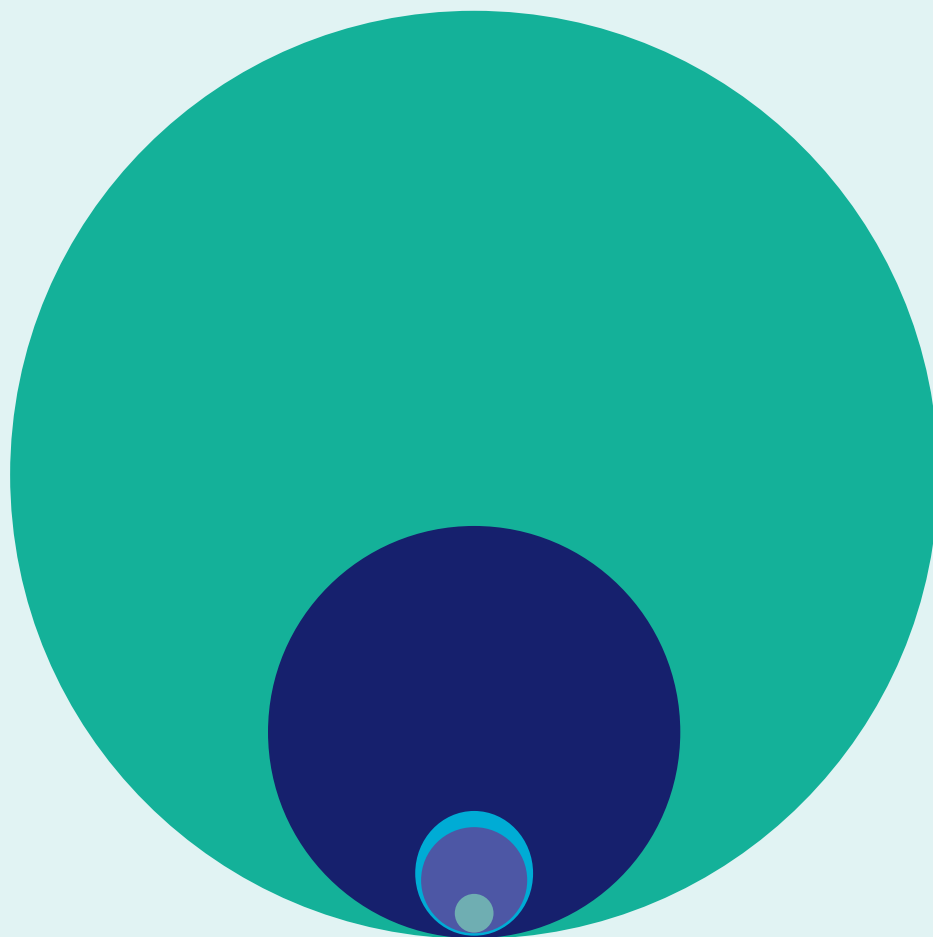
\$1,643,434
Education

\$669,100
Parishes

\$184,559
*Ministries
& Outreach*

\$183,559
Clergy

\$47,128
Cemeteries



*“If everything continues
as it was, if we spend our
days content that ‘this is
the way things have always
been done,’ then the gift
vanishes, smothered by the
ashes of fear and concern for
defending the status quo.”*

— Pope Francis

FINANCIALS

Year-in-Review

We are pleased to present the Foundation's Investment and Performance Review

as of June 30, 2019 along with Selected Financial Information from the Audited Financials for the fiscal years ending June 30, 2019 and June 30, 2018.

Fiscal Year 2019 was a year of inconsistent trends. On the one hand, global growth slowed, manufacturing data was at its weakest level in two years, and challenges from geopolitical risk, particularly trade wars and tariffs, persisted. However, despite this ominous backdrop, the Foundation's value, as well as the overall markets, continued to reach new highs, and the growth in the Foundation, as well as the returns generated, continued to show positive progress. At the end of the fiscal year, the Foundation had over \$90 million in assets as compared to \$85 million from Fiscal Year 2018.

Additionally, Fiscal Year 2019 saw a strong influx of new endowment funds established within the foundation, as 10 individual and organizational donors set up funds to support a variety of interests.

For questions about any of the information provided within this section, please contact Robert Barron, Senior Financial Analyst for the Foundation at Robert.Barron@Archbalt.org or 410-547-5323.

Investment Review

EQUITY

60.7%

60%

FIXED INCOME

18.8%

15%

ALTERNATIVES

10.7%

12%

REAL ASSETS

9.8%

13%

■ ACTUAL PORTFOLIO INVESTMENT
■ RECOMMENDED POLICY

ENDOWMENT MARKET VALUES ANNUAL 2016-2019

Jun 2019 \$ 90,872,814

Jun 2018 \$ 85,046,318

Jun 2017 \$ 77,053,371

Jun 2016 \$ 57,619,325

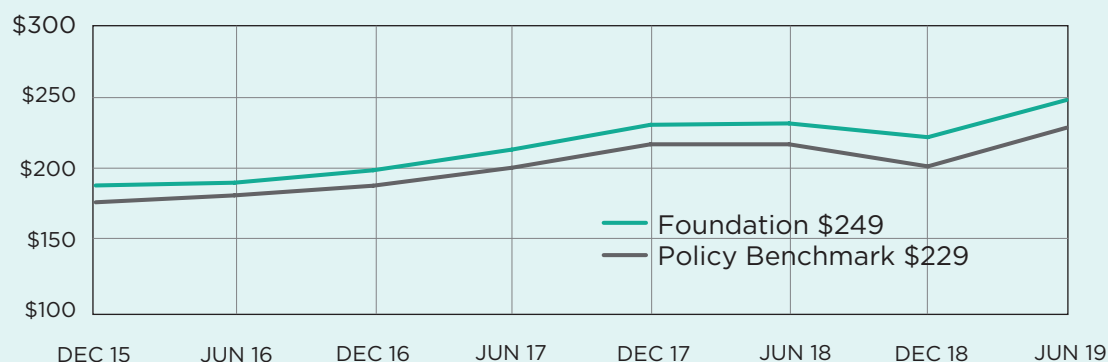
FINANCIALS

Performance Review

Annualized Performance

ANNUALIZED PERFORMANCE	FOUNDATION	POLICY BENCHMARK ¹
QTD	3.7	3.2
1 Year	7.4	5.7
3 Years	9.7	8.3
5 Years	5.5	4.4
Inception	9.1	8.2

Cumulative Performance (Growth of \$100)



Annualized Return

9.1% FOUNDATION

8.2% POLICY BENCHMARK

Policy Benchmark¹

1/1/2009 to 3/31/2012 65.0% S&P 500 Index; 33.0% Bloomberg Barclays US Aggregate Bond Index; 2.0% 3 Month Tbill
 4/1/2012 to 7/31/2017 53.0% MSCI AC World Index Net; 16.0% HFRI FOF Composite Index; 15.0% Bloomberg Barclays US Aggregate Bond Index; 5.0% Bloomberg Commodity Index; 4.0% NCREIF ODCE (Lagged); 4.0% S&P Global LargeMidCap Commodi; 3.0% Barclays Capital US TIPS Index
 8/1/2017 to 6/30/2019; 60.0% MSCI AC World Index Net; 15.0% Bloomberg Barclays US Aggregate Bond Index; 12.0% HFRI FOF Conservative Index; 5.0% NCREIF ODCE (Lagged); 5.0% S&P Global LargeMidCap Commodi; 3.0% Barclays Capital US TIPS Index.

FINANCIALS

Selected Financial Information

Statements of Financial Position as of June 30, 2019 and 2018

	2019	2018
ASSETS		
Cash	\$ 149,036	\$ 112,285
Investments	89,098,764	83,789,028
Other assets	587,679	573,426
Agency funds held for others	1,771,240	1,734,120
Contributions receivable net of allowance and discount of \$264,215 and \$305,702 at June 30, 2019 and 2018	626,004	821,082
TOTAL ASSETS	\$ 92,232,723	\$ 87,029,941
LIABILITIES AND NET ASSETS		
Accrued grant liabilities	\$ 4,078,992	\$ 3,994,567
Accrued expenses	625,513	531,375
Agency funds and liabilities to related entities	1,771,240	1,734,120
Total liabilities	6,475,745	6,260,062
Total net assets	85,756,978	80,769,879
TOTAL LIABILITIES AND NET ASSETS	\$ 92,232,723	\$ 87,029,941

Statements of Activities and Changes in Net Assets Year Ended June 30, 2019 and 2018

	2019	2018
REVENUE, GAINS AND OTHER SUPPORT		
Contributions	\$ 2,956,090	\$ 2,611,617
Grant income	66,100	-0-
Other income	14,254	(52,315)
Realized gains on investments	1,140,245	1,026,178
Unrealized gains (loss) on investments	4,956,731	5,549,540
TOTAL REVENUE, GAINS AND OTHER SUPPORT	\$ 9,133,420	\$ 9,135,020
EXPENSES		
Management fees	\$ 941,394	\$ 757,080
Grant expenses	3,204,927	3,142,357
Total grants and expenses	4,146,321	3,899,437
Changes in net assets	4,987,099	5,235,583
NET ASSETS		
Beginning of year	\$ 80,769,879	\$ 75,534,296
End of year	\$ 85,756,978	\$ 80,769,879



GIFTS THAT *Grow a Generation*

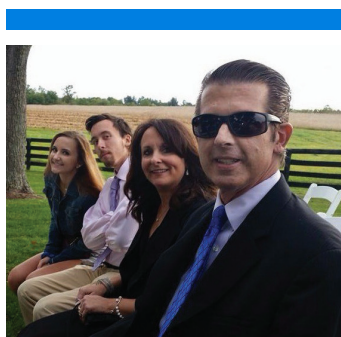
The Catholic Community Foundation is profoundly grateful to the donors who, among them, created 15 endowment funds within the Foundation in Fiscal Year 2019. We are particularly grateful to Jordan Wrzesien, Dr. Barbara Gaver, and the Board of GB Charities, Inc. for speaking with us in greater detail about the funds they established, about their goals in setting them up, and for allowing us to chronicle their stories of giving.

A TRIBUTE TO HER FATHER

The Scott Wrzesien Memorial Scholarship Fund



Most endowment funds are established by someone much further along in life than Jordan Wrzesien.



The Wrzesien Family, from front to back: Scott, Donna, Jacob, and Jordan.

“The aspect of my Senior Project that I am most proud of is the fact that I could honor my Dad in a way that truly attests to who he was as a person, helping others. Nothing feels better than to be able to truly lift someone up when they are feeling low, and that is exactly what I have been able to do with this scholarship.”

—Jordan Wrzesien

A 2018 graduate of The John Carroll School, now attending Merrimack College in Massachusetts, Jordan's life was upended during her high school freshman year when her father, Scott, was diagnosed with cancer. That diagnosis created a financial hardship for the family, making it questionable whether Jordan would be able to continue to attend John Carroll. Fortunately, the administration worked closely with her parents, enabling Jordan to remain at the school.

Scott Wrzesien ultimately didn't survive his battle with cancer. In the face of this tragic loss, Jordan was determined to see that her father's memory live on. For her Senior Project, a requirement for graduation from John Carroll, she chose to establish a scholarship in loving memory to him.

Jordan said, “I knew that I wanted my Senior Project to mean something. We were grateful for how great the administration treated us and wanted to be able to do that for someone else. It was a way to honor my dad and who he was as a person.” Thus began Jordan's journey toward establishing *The Scott Wrzesien Memorial Scholarship Fund* within the Catholic Community Foundation. Designated to be awarded to a John Carroll family directly affected by cancer, the distributions from this fund are providing tuition assistance in order to alleviate the family's financial stress.

Louise Géczy, Senior Project Coordinator for John Carroll, recounted, “I remember one of our first conversations. Jordan said the school had done so much for her and her family when her father was ill. She wanted to be able to give back.”

Jordan's passion and courage were met with a success that exceeded anyone's expectations, as she raised \$30,000 for her fund. That, along with money added through the Catholic Community Foundation's Mustard Seed Match Program, has already resulted in two scholars and their families being helped, quite impressive for a high school senior! Additionally and importantly, in perpetuity there will be a student at John Carroll who is benefitting from Jordan's work, keeping her dad's memory alive.

Stephen DiBiagio, President of John Carroll, summed up the impact of Jordan's efforts, “It demonstrates to the community that in the face of an overwhelming tragedy, you can stand up and through force of will overcome a difficult situation, actually making something good happen for others. The courage that Jordan displayed in taking her father's memory forward and in doing so by helping others, is a model of determination and love for all of us.”



AN IMAGINATIVE SOLUTION TO AN EMPLOYMENT GAP

In My Father's House Endowment for Disabilities Ministry

“I have two children who were challenged, and I’ve seen them blossom into happier, more secure young adults when they became employed.”

— Dr. Barbara Gaver



Young adults with special needs, who are between the ages of 18 and 23, can sometimes live in an uneasy state of uncertainty, caught between their high school years and when the State of Maryland’s Employment Association is able to help find them employment.


Dr. Barbara Gaver, who has two special needs children of her own, has seen the toll this gap takes and has come up with an imaginative solution to close it.

Last year, Dr. Gaver established the *In My Father’s House Endowment for Disabilities Ministry* in the Catholic Community Foundation. Her idea is to have parishes throughout our Archdiocese employ young adults with disabilities, adding dignity and purpose to those first five years of their adulthood. The fund will help parishes cover the salaries of these young people.

Dr. Gaver said, “I think Jesus gave me children who have special needs because he wanted me to understand firsthand the challenges they face and the struggles they go through. I often feel special needs children can be overlooked and undervalued. I’d like to see them play a more active role in the Catholic Church community. I have two children who were challenged, and I’ve seen them blossom into happier, more secure young adults when they became employed. Receiving a regular paycheck made them feel that their time and work were valuable. Their job gave them a purpose and an opportunity to make a contribution. It also helped them to pay some of their own bills.”

A pilot parish for the program, the Catholic Community of Ascension and St. Augustine (CCASTA), has already begun to lead this effort. Since last summer, CCASTA has employed Paul Jeske (pictured top, left, in preparation for his Confirmation), now 19, as a facilities assistant. Paul, a critical member of the parish’s support staff, serves in many capacities essential to the parish: grounds keeper, maintenance man, administrative aide. When asked if the job has changed his life, Paul said, “It helped me get used to the working world and learn what it’s like to have a job.” His mother, Jen, said, “This has been life-changing for Paul. It has given him the confidence to know that he can do a good job and hold his own in the working world.”

“Paul truly is a valued asset to our staff,” said Michele Poligardo, Director of Religious Education & Special Needs Faith Formation at CCASTA, “he is a super hard worker and will do whatever he is asked.” As for the program itself, Poligardo feels it adds great value to the parish community. “Having the presence of people with special needs here,” she said, “reminds us that God wants us to live with simple joys and to love others unconditionally. I think the effect of this fund will be wonderful. It’s great for everyone to experience the dignity of work.”

Eventually, Dr. Gaver would like to see her fund support catechesis for those with special needs, another area where she feels they are sometimes underserved. But for now, the focus remains on employment. 

LIFELONG FRIENDS UNITED IN GIVING BACK

GB Charities' Endowment Funds in Support of Tuition Assistance



**ST. IGNATIUS
LOYOLA ACADEMY**
Educating Boys • Transforming Lives



CALVERT HALL



MARYVALE
LEARN. LEAD. SUCCEED.
Educating Young Women for Life



“I deeply appreciate the gift of having my group of friends from high school and college still together and all united in what I consider a second gift – the pursuit of our charity’s cause of giving needy families educational opportunities similar to those we had,” said Neil Lanzi, President of GB Charities.

Since its founding, GB Charities has supported approximately 40 Catholic schools, helping more than 1,300 students and providing \$4 million dollars in tuition assistance. As part of its mission, the charity recently established six endowment funds with the Catholic Community Foundation in support of tuition assistance for Cristo Rey Jesuit High School, Maryvale Preparatory School, Notre Dame Preparatory School, St. Ignatius Loyola Academy, Calvert Hall College High School, and Loyola Blakefield.

GB Charities officially formed in 1992, but the history of this special group of friends began long before that, back in their high school days. Most of them attended Calvert Hall, though some students from Loyola Blakefield and Towson Catholic were also part of the original group. They went on to college, yet always remained close, reuniting on a regular basis at Jerry’s Belvedere on York Road. It all began as a social thing, but then became much more.

“We realized how invaluable the experience of attending a Catholic school was. We wanted to do something good, something meaningful, and came up with helping educate disadvantaged children. It was a

way to keep the group together and give back at the same time,” said Rick Bozel, a founding member of GB Charities.

Chuck Stembler, Principal at Calvert Hall, one of the schools whose students will benefit from these funds, believes this makes the difference between whether or not certain families will be able to send their son to Calvert Hall. He said, “Without that money, there’s no way some of our students would be here. We believe that a diverse environment really enriches our community. We say to all our students, ‘We want to have people here who are just like you and people who are not like you at all.’”

James Sellinger, Chancellor of Education for the Archdiocese said, “Access to the quality, values-oriented education offered by our Catholic schools, not only changes the life of the beneficiary, but also impacts our community as a whole. Our schools’ students go out into the world well-grounded in how to lead a life filled with compassion. They know how to look beyond themselves and focus on the greater good. Our friends who created GB Charities are a living example of that.”

Photo courtesy of GB Charities, Inc.



ENDOWMENTS

New Endowment Funds

Fifteen new endowment funds were established within the Catholic Community Foundation in Fiscal Year 2019, representing an increase of over \$400,000 in assets held under management. Established by individuals, parishes, schools, and philanthropic organizations, these endowments will provide critical funding for their beneficiaries as designated by their fund holders. In addition to the funds profiled in prior pages, the seven funds below were also created in FY19.



The Bernard Kelly Scholarship Fund

Established by Resurrection-St. Paul School, this fund, named for a beloved member of the Church of the Resurrection parish community, will provide tuition assistance grants for students attending this Blue Ribbon school.

The Darby-Jacokes Scholarship Fund

Lilly and David Hunter created this fund to benefit the School of the Cathedral's Regina Plan. This unique program assists students with mild to moderate language-based differences. Using phonics, varying strategies, and multi-sensory techniques, Regina Plan tutors help students succeed in the language arts.

The Joseph V. and Anna I. LaMonte Endowment for the Poor

Using an unrestricted gift from Mr. and Mrs. LaMonte to establish this fund, the Catholic Community of South Baltimore created this fund to augment gifts made to the parish poor box, reflecting the parish's commitment to serve those among us with the least in resources.

The Josh Hamer Memorial Scholarship Fund

Mrs. Jennifer Hamer established this fund in loving memory of her son, Joshua, a star athlete and scholarship recipient himself to The John Carroll School. This endowment will provide tuition assistance to a young baseball player of financial need who wishes to attend John Carroll, who demonstrates academic excellence and a commitment to self, and who honors the principles of the school. The ideal candidate will show a dedicated and robust work ethic, will maintain high academic standards, and will seek to honor his or her community through compassion, faith, friendship, and love.

The Our Lady of the Mountains Perpetual Care Endowment Fund

Established by the parish of Our Lady of the Mountains, this fund will provide for the care and maintenance of the parish cemeteries.

The Riepe Fund

Established by an anonymous benefactor and named for Father Charles Riepe, this endowment will provide scholarships to incoming freshmen to The John Carroll School who are scholar athletes. Often referred to as "the single most influential figure" in the school's history, Father Riepe served in many capacities at John Carroll – founding chaplain, principal, coach, teacher, trustee – and in establishing this fund in loving memory to him, the school has ensured his legacy of giving will continue.

The St. Augustine's, Williamsport Cemetery Endowment Fund

Established by the parish of St. Augustine, Williamsport, this fund will provide for the care and maintenance of the parish cemetery.



ENDOWMENTS

Endowment Funds by Purpose

513 *Total Endowments*

Parish 187 ENDOWMENTS | *Education* 225 ENDOWMENTS
Ministry & Outreach 43 ENDOWMENTS | *Clergy* 29 ENDOWMENTS
Cemetery 29 ENDOWMENTS

\$89,739,188* *Total*



**Figure does not include assets held within donor advised funds.*





ENDOWMENTS

Parish Endowment Funds



\$89,739,188
Total Endowment Funds

\$22,303,554
For Parishes



513
Total Endowment Funds

187
Parish Funds



137
Total Parishes

85
Parishes with Endowments



Basilica of the Assumption

The Monsignor Arthur F. Valenzano
Music Ministry Fund

The Teresa A. and Martin G. Knott
Endowment Fund

Cathedral of Mary Our Queen

The Cathedral of Mary Our Queen
Preservation Trust Fund

The Cathedral of Mary Our Queen
Windows of Faith Endowment

Catholic Community of Ascension & St. Augustine

The Catholic Community of Ascension
& St. Augustine Catholic Education
Endowment Fund

The Catholic Community of Ascension
& St. Augustine Parish Endowment Fund

The Mary Rettaliata Endowment Fund

The St. John Neumann Endowment Fund

The Stasiowski Family Endowment Fund

Catholic Community of South Baltimore

The Catholic Community of South Baltimore
Catholic Education Fund

The Catholic Community of South Baltimore
Ministry Endowment

The Joseph V. and Anna I. LaMonte
Endowment for the Poor

The Sr. Catherine Cress Endowment Fund
for Pastoral Care

The Wolff Family Endowment Fund

Christ the King

Christ the King Catholic Education
Endowment Fund

Christ the King Parish Endowment Fund

The Catherine Mary Brown Memorial Fund

Church of the Annunciation

Church of the Annunciation Parish
Endowment Fund

The Annunciation Endowment
for Senior Care Ministry

The Church of the Annunciation
Catholic Education Endowment

The Donald & Naomi Steffe Endowment Fund

Church of the Holy Spirit

The Church of the Holy Spirit Catholic
Education Endowment Fund

The Church of the Holy Spirit Parish
Endowment Fund

The Reverend Joseph C. Simmons
Endowment Fund

Church of the Immaculate Conception, Towson

Jessica Meredith Jacobsen Memorial
Endowment Fund

The Immaculate Conception Scholarship
Endowment Fund

The John Gerald McDade Memorial
Endowment Fund

The Reverend Monsignor F. Dennis Tinder
Endowment Fund

Church of the Resurrection

The Church of the Resurrection Preservation
& Maintenance Fund

The Church of the Resurrection School
Endowment Fund

Corpus Christi

Frank and Mary Kelley Family Memorial
Endowment Fund

The Corpus Christi Parish Endowment Fund

The Eliza L. Jenkins Endowment Fund

Divine Mercy Parish

The Joseph and Wilda Fahey Family Fund

The St. Ann's Catholic Education
Endowment Fund

The St. Ann's Parish Endowment Fund

The St. Michael, Frostburg Parish
Endowment Fund

The St. Peter's, Westernport Catholic Education
Endowment Fund

The St. Peter's, Westernport Parish
Endowment Fund

Holy Family, Middletown

The Deacon George and Dinah Sisson
Endowment Fund

The Holy Family, Middletown Catholic Education
Endowment Fund

The Judith & Stephen Kowalski Youth Ministry
Endowment Fund

Holy Family, Randallstown

The Holy Family Catholic Education
Endowment Fund

The Holy Family Parish Endowment Fund

Immaculate Heart of Mary

The Immaculate Heart of Mary Education
Endowment Fund

The Immaculate Heart of Mary Parish
Endowment Fund

Our Lady of Grace

The Our Lady of Grace Catholic Education
Endowment

The Spirit of Grace Endowment Fund

Our Lady of Mount Carmel, Middle River

The Our Lady of Mt. Carmel Parish
Endowment Fund

The Zeller Family Endowment Fund

Our Lady of Mount Carmel, Thurmont

The Our Lady of Mount Carmel, Thurmont
Catholic Education Endowment Fund

Our Lady of Perpetual Help

The Alfred and Rose Sorbello Memorial
Endowment Fund

The Joseph and Ann P. Johnson Family Fund

The Our Lady of Perpetual Help Catholic
Education Endowment

The Our Lady of Perpetual Help Parish
Endowment Fund

Our Lady of the Chesapeake

The Our Lady of the Chesapeake Catholic
Education Endowment

The Our Lady of the Chesapeake Parish
Endowment Fund

Our Lady of the Fields

The Our Lady of the Fields Catholic Education
Endowment Fund

The Our Lady of the Fields Parish
Endowment Fund

Our Lady of the Mountains

The Mary Margaret Winner Music Scholarship
Endowment Fund

The Mary Murray Endowment Fund

The St. Patrick, Cumberland, Catholic Education
Endowment Fund

The St. Patrick, Cumberland, Historic
Preservation & Maintenance Endowment Fund

The St. Patrick, Cumberland, Parish
Endowment Fund

The St. Patrick, Mt. Savage Historic Preservation
& Maintenance Endowment Fund

The St. Patrick Parish Endowment Fund

Our Lady of Victory

The Our Lady of Victory Parish
Endowment Fund

Sacred Heart, Glyndon

The Fenwick Family Charitable Fund*

The Germaine and David Ricker
Endowment Fund*

The Lloyd E. & M. Agatha Aiken
Endowment Fund*

The Sacred Heart Catholic Education
Endowment Fund

The Sacred Heart Parish Endowment Fund

The Temple Smith Endowment Fund

Shrine of St. Alphonsus Liguori

The St. Alphonsus Catholic Education
Endowment Fund

The St. Alphonsus Parish Endowment Fund

Shrine of the Little Flower

The Shrine of the Little Flower Catholic
Education Endowment Fund

The Shrine of the Little Flower Parish
Endowment Fund

Shrine of the Sacred Heart

The Keelty Perpetual Fund

St. Agnes/St. William of York

The St. Agnes Parish Catholic Education
Endowment Fund

The St. Agnes Parish Endowment Fund

St. Alphonsus Rodriguez

The Artin A. and Colette M. Shoukas India
Education Fund

The St. Alphonsus Rodriguez Catholic Education
Endowment Fund

St. Andrew by the Bay

The Drew and Risa Hudson Family Fund for
Faith Formation

The St. Andrew by the Bay Faith
Formation Fund

St. Ann, Baltimore

The Kennedy-Boone Family Endowment Fund

St. Ann, Hagerstown

The Posner Family Endowment Fund

The St. Ann, Hagerstown Tuition
Assistance Fund

St. Augustine, Williamsport

The Reverend Monsignor Alfred E. Smith
Endowment Fund*

The St. Augustine, Williamsport,
Catholic Education Fund

St. Bernardine

The St. Bernardine Catholic Educational
Endowment Fund

The St. Bernardine Parish Endowment Fund

St. Casimir

The St. Casimir Catholic Education
Endowment Fund

The St. Casimir Church Preservation
Endowment Fund

The St. Casimir Parish Endowment Fund

St. Charles Borromeo

The Mary Bradley Zabicki Endowment Fund

The St. Charles Borromeo Catholic Education
Endowment Fund

The St. Charles Borromeo Parish
Endowment Fund

St. Clare

The St. Clare Endowment Fund

St. Clement I

The McKenna Catholic Education
Endowment Fund

The St. Clement Parish Endowment Fund

ENDOWMENTS

Parish Endowment Funds

St. Clement Mary Hofbauer

The Lois Loraine Jones Endowment Fund

The St. Clement Mary Hofbauer Catholic Education Endowment Fund

The St. Clement Mary Hofbauer Parish Endowment Fund

St. Elizabeth Ann Seton

The St. Elizabeth Ann Seton Catholic Education Endowment Fund

The St. Elizabeth Ann Seton Parish Endowment Fund

St. Francis de Sales

The Reverend Monsignor G. Michael Schleupner Fund

The St. Francis de Sales Catholic Education Endowment Fund

The St. Francis de Sales Parish Endowment Fund

St. Francis of Assisi, Baltimore

The Barbara Jo Wuest Educational Trust

The Otto J. and Eva B. Wuest Educational Trust

St. Ignatius, Hickory

The St. Ignatius, Hickory Catholic Education Endowment Fund

The St. Ignatius, Hickory Parish Endowment Fund

St. Ignatius Loyola, Ijamsville

St. Ignatius Loyola Catholic Education Endowment Fund

St. Ignatius Loyola Historic Preservation & Maintenance Fund

St. Ignatius Loyola Parish Endowment Fund

St. James

The St. James, Boonsboro Catholic Education Endowment Fund

St. Jane Frances de Chantal

The Fritz Family Endowment Fund

The St. Jane Frances de Chantal Catholic Education Endowment Fund

The St. Jane Frances de Chantal Parish Endowment Fund

St. Joan of Arc

St. Joan of Arc Parish Endowment Fund

St. John the Evangelist, Columbia

The Bartolo Family Fund

The Reverend Monsignor Richard H. Tillman Endowment Fund



The St. John the Evangelist, Columbia Catholic Education Endowment Fund

The St. John the Evangelist, Columbia Parish Endowment Fund

St. John the Evangelist, Frederick

The Father Wayne Funk Religious Education Fund

The St. John the Evangelist, Frederick Parish Endowment Fund

St. John the Evangelist, Long Green Valley

The St. John the Evangelist's, Long Green Valley Parish Endowment Fund

St. John the Evangelist, Severna Park

The St. John, Severna Park, Parish Endowment for the Poor

The St. John, Severna Park, Parish Endowment Fund

St. John, Westminster

The Bettie Beauchamp and Shirley Young Endowment Fund

The Reverend Monsignor Arthur Valenzano Endowment Fund

The St. John Westminster Parish Endowment Fund

St. Joseph, Fullerton

The St. Joseph, Fullerton Catholic Education Endowment Fund

The St. Joseph, Fullerton Parish Endowment Fund

St. Joseph, Hagerstown

The St. Joseph, Hagerstown Parish Endowment Fund

St. Joseph, Odenton

The St. Joseph, Odenton Catholic Education Endowment Fund

The St. Joseph, Odenton Parish Endowment Fund

St. Joseph Passionist Monastery

The St. Joseph's Passionist Monastery Educational Endowment

The Stephen Jarboe Endowment Fund

St. Joseph, Sykesville

The Andrew R. and Barbara J. Becker Fund for Youth Ministry

St. Joseph, Texas

The St. Joseph, Texas Legacy Giving Fund

St. Katharine Drexel

The St. Katharine Drexel Catholic Education Endowment Fund

The St. Katharine Drexel Parish Endowment Fund

St. Leo the Great

The St. Leo Church Catholic Education Endowment Fund

The St. Leo Church Preservation & Maintenance Endowment Fund

St. Louis

The Murphy-Faulstich Endowment Fund*

The St. Louis Catholic Education
Endowment Fund

The St. Louis Parish Endowment Fund

St. Luke

The St. Luke Education Endowment Fund

St. Margaret

The Carolyn M. and Charles J. Slimowicz
Family Fund*

The Jane Dean Endowment Fund*

St. Mary, Annapolis

The Gilbert Strittmatter Memorial
Endowment Fund

The St. Mary's Annapolis Parish
Endowment Fund

The Tyler Family Fund of the St. Mary's
Annapolis Parish Endowment

St. Mary, Hagerstown

The Reverend Monsignor Robert S. Passarelli
Endowment Fund for the Poor

The St. Mary, Hagerstown Parish
Endowment Fund

St. Mary of the Assumption, Govans

St. Mary of the Assumption Catholic
Education Endowment Fund

St. Mary of the Assumption Parish
Endowment Fund

St. Mary of the Assumption School
Endowment Fund

St. Michael, Poplar Springs

The Anna Esposito Endowment Fund

The Emmett and Audrey Full Family
Endowment for Evangelization

The Reverend Michael J. Ruane
Endowment Fund

The Richard E. Walters, Jr. Endowment Fund

The Robert and Nancy Landsman Family Fund

The St. Michael, Mt. Airy Service Justice
Endowment Fund

The St. Michael, Poplar Springs Parish
Endowment Fund

The Timothy and Barbara Riley Fund

St. Michael the Archangel

The St. Michael the Archangel Parish
Endowment Fund

St. Patrick, Havre de Grace

The Sister Frances Catholic Education
Endowment Fund

St. Paul

The St. Paul Catholic Education
Endowment Fund

The St. Paul Parish Endowment Fund

St. Peter

The Sarah Frances Anthony Endowment Fund

The St. Peter, Hancock Catholic Education
Endowment Fund

St. Peter the Apostle, Libertytown

The St. Peter, Libertytown Catholic Education
Endowment Fund

The St. Peter, Libertytown Parish
Endowment Fund

St. Pius X

The St. Pius X Catholic Educational
Endowment Fund

The St. Pius X Parish Endowment Fund

St. Thomas Aquinas

The Darlene Henry Fund

The St. Thomas Aquinas Parish
Endowment Fund

The St. Thomas Aquinas School
Endowment Fund

The St. Thomas Aquinas Tuition Assistance
Endowment Fund

St. Ursula

The St. Ursula Catholic Education
Endowment Fund

The St. Ursula Parish Endowment Fund

St. Veronica

The St. Veronica Catholic Education Fund

The St. Veronica Parish Endowment Fund

Transfiguration Catholic Community

The Transfiguration Catholic Community
Catholic Education Endowment Fund

The Transfiguration Catholic Community
Parish Endowment Fund

**Fund supports multiple purposes*

*“The church can be
the landing pad for
a confused, scared,
searching millennial,
a place to turn to when
the chaos and noise
of young adulthood,
new marriage, young
parenthood, or perpetual
singlehood rages on.”*

— Katie Prejean McGrady,
International Catholic Speaker
and Author

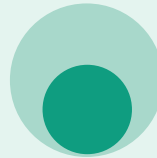




ENDOWMENTS

Education Endowment Funds

Supporting the mission of Catholic Schools in the Archdiocese of Baltimore



\$89,739,188

Total Endowment Funds

\$51,246,194

for Education



513

Total Endowment Funds

225

Funds for Education

163 school-specific funds – supporting 50 Schools
46 funds in support of tuition assistance
12 funds in support of PIE
4 county-specific funds

Allegany County Catholic Schools

Murphy Educational Endowment for Western MD*
 The Mary Murray Fund
 The Valenzano Family Endowment Fund

Anne Arundel County Catholic Schools

The Baldwin Family Endowment Fund

Archbishop Borders School

The Archbishop Borders Educational Enhancement Fund

Archbishop Curley High School

The Archbishop Curley High School Endowment Fund
 The Michael G. Mann Memorial Endowment Fund

Archbishop Spalding High School

The Archbishop Spalding High School Endowment Fund

Bishop Walsh School

The Bishop Walsh Foundation Fund

Calvert Hall College High School

The Dominic Cottone Endowment Fund
 The Timothy J. and Leslie Chairs Family Fund*

Cardinal Shehan School

The Cardinal Shehan School Endowment Fund

Cristo Rey Jesuit High School

Cristo Rey Jesuit High School (Baltimore) Endowment Fund
 The Reverend William J. Watters, S.J. Scholarship Endowment Fund

Holy Angels Catholic School

The Holy Angels Catholic School Endowment Fund
 The Timothy J. and Leslie Chairs Family Fund*

Immaculate Conception School

Jessica Meredith Jacobsen Memorial Endowment Fund
 The Immaculate Conception Scholarship Endowment Fund

The Immaculate Conception School Endowment Fund

The Reverend Monsignor Edward J. Lynch Scholarship Fund

The Reverend Monsignor F. Dennis Tinder Endowment Fund

Immaculate Heart of Mary School

The Immaculate Heart of Mary School Endowment Fund

The John Carroll School

The Josh Hamer Memorial Scholarship Fund
 The Riepe Fund
 The Scott Wrzesien Memorial Scholarship Fund

Monsignor Slade Catholic School

The Monsignor Slade Catholic School Endowment Fund

Mother Seton Academy

The Julia L. Sadler Memorial Fund dedicated to St. Elizabeth Ann Seton

The Mary Chairs Endowment Fund

The Mother Seton Academy Endowment Fund

Mount de Sales Academy

The Mt. de Sales Academy St. Martin de Porres Scholarship Fund

The Sister Denise Eby, D.C. Endowment Fund

The St. Maria Faustina Divine Mercy Scholarship Fund for Mount de Sales Academy

Mount Saint Joseph High School

The Mount Saint Joseph High School Endowment Fund

The Samuel and Patricia Chairs Family Fund

Notre Dame Preparatory School

The Notre Dame Preparatory School Endowment Fund

The Notre Dame Preparatory School Tuition Assistance Fund

Our Lady of Grace School

The Albert & Concetta Radecke Family Fund

The Gregory E. Bushman, Our Lady of Grace School Scholarship Fund

The Spirit of Grace Endowment Fund

Our Lady of Mount Carmel Elementary & High Schools

The Baynes Family Endowment Fund

The Dr. Jeff Bunn Music Scholarship Fund

The Father Joseph Kitko Scholarship Fund of Mt. Carmel HS

The Henry A. & Mabel A. Bauernfeind Memorial Scholarship Endowment Fund

The James "Pop" Reynolds Memorial Scholarship

The Joseph Cramer Memorial Scholarship Endowment Fund

The Linda Fannon Scholarship Fund of Our Lady of Mt. Carmel

The Michael & Kathleen Sipes Scholarship Fund

The Michelle Bevans Memorial Scholarship Endowment Fund

The Norbert & Oriole Porter Scholarship Fund

The Our Lady of Mt. Carmel Elementary School Endowment Fund

The Our Lady of Mt. Carmel High School Endowment Fund

The Regina and Eugene McKenzie Scholarship Fund

The Reverend Don McMaster Scholarship Endowment Fund

The Reverend Monsignor Robert L. Hartnett Fund

The Robert and Eleanor Romadka Tuition Assistance Fund

The Romadka Family Endowment Fund

The Sisters of St. Francis Endowed Scholarship Fund

The Zachary Shiflett Endowment Fund

Our Lady of Perpetual Help School

The Our Lady of Perpetual Help School Endowment Fund

Our Lady of Victory School

The Our Lady of Victory School Endowment Fund

The Sr. Barbara Tucker Scholarship Endowment Fund

The Sr. Ruth Marie Hindley, S.N.D. Scholarship Endowment Fund

Partners In Excellence (PIE)

Scholarship Program

The Batza Family Trust

The Curran and Jody Harvey Family Endowment Scholarship Fund

The Earl and Darielle Linehan Family Trust Fund

The Edward A. Crooke Scholars Fund

The Father Tim Brown Reading Scholars Program Fund

The James and Carol Ritz Family Fund

The Joyce and Hunter Kerlin Charitable Fund

The Mark and Loy Timbie Endowment Fund

The Michael & Priya Pinto Tuition Assistance Endowment Fund

The Partners in Excellence Endowment Fund

The Raymond & Rand Mason Family Endowment Fund

The Stansky PIE Scholarship Endowment Fund

Resurrection - St. Paul School

The Bernard Kelly Scholarship Fund

The Church of the Resurrection School Endowment Fund

The Resurrection - St. Paul School Endowment Fund

Sacred Heart School, Glyndon

The Bradley T. MacDonald Family Endowment Fund

The Sacred Heart, Glyndon Interparish School Endowment Fund

The Sacred Heart School Endowment Fund

The Temple Smith Endowment Fund

The School of the Cathedral of Mary Our Queen

The Bill and Lisa Stromberg Endowment for Tuition Assistance and Seminarian Education*

The Cathedral of Mary Our Queen Fund for Catholic Education

The Darby-Jacokes Scholarship Fund

The L. Patrick Deering Education Fund

The Linda A. and J. Scott Murphy Family Fund

The School of the Cathedral of Mary Our Queen Endowment Fund

School of the Incarnation

The ClearEdge IT Solutions Technology Endowment

The School of the Incarnation Endowment Trust

The School of the Incarnation Tuition Assistance Endowment Fund

Sisters Academy of Baltimore

Sisters Academy of Baltimore Endowment Fund

The Mary Chairs Endowment Fund

Ss. James & John Catholic School

Albert and Loretta Reichelt Endowment Fund

Andrew R. and Hannah C. Dunevant Scholarship Fund

Charles and Theresa Rizzo Scholarship Fund

Connolly Organ Families Scholarship Fund

Daley-Pech Family Scholarship Endowment

Gene Lawrence Tuition Assistance Endowment

Glenn Meyer Scholarship Endowment Fund

Harry Meyer Scholarship Endowment Fund

Heil Family Scholarship Fund

Jessica and Nicholas Brown Scholarship Endowment Fund

Leo and Adrienne Fenzel Scholarship Fund

Mark D. Palmer Scholarship Fund

McCarthy/Staudenmaier Families Scholarship Fund

Patricia E. Sahlin Scholarship Fund

The Charlotte K. Martin Scholarship Fund

The Christina Marie Polley Scholarship Fund

The Claire Renaux Scholarship Fund

The Drew Dedrick Scholarship Fund

The Father Richard T. Lawrence Endowment Fund

The Genevieve Spain Rogers Scholarship Fund

The Gruzynski-Conrad Families Scholarship Fund

The Mac Ball Tuition Assistance Endowment

ENDOWMENTS

Education Endowment Funds

The Magno Zito Family Scholarship Fund
The Mary “Molly” Jameson Scholarship Fund

The Raymond and Patricia Bahr
Scholarship Fund

The Reverend Joseph Wichland C.Ss.R.
Scholarship Fund

The Russell Gordon Croft Scholarship Fund

The Sarah Mansueto Endowment Fund

The Ss. James & John Catholic School Tuition
Assistance Fund

St. Francis of Assisi School

The St. Francis of Assisi School Endowment Fund

The St. Francis of Assisi Tuition Assistance
Endowment Fund

St. Joan of Arc School

The Reverend Kevin T. Schenning Fund

St. John the Evangelist School, Long Green Valley

The St. John School, Long Green Valley
Endowment Fund

St. John the Evangelist School, Severna Park

The St. John, Severna Park, School
Endowment Fund

St. John Regional Catholic School, Frederick

The St. John Regional Catholic School, Frederick
Mustard Seed Match Tuition Assistance
Endowment Fund

St. John School, Westminster

The Cecilia Hinkel Endowment Fund

The Nellie Agnes Arnold Scholarship
Endowment Fund

The St. John School Endowment Fund

The Walter and Anna Hackett Family Fund

St. Joseph School, Cockeysville

The St. Joseph School, Cockeysville
Endowment Fund

St. Joseph School, Fullerton

The Julie A. Sparr Memorial Scholarship Fund

The St. Joseph School Endowment Fund

St. Louis School

The Saint Louis School Endowment Fund

The Sr. Mary Catherine Endowment Fund

The Thomas Merton Scholarship Fund

St. Margaret School

The Carolyn M. and Charles J. Slimowicz
Family Fund*

The Jackie Kinzler Memorial Fund

The Jane Dean Endowment Fund*

The Reverend Francis X. Callahan Fund

The St. Margaret Tuition Assistance
Endowment Fund

St. Maria Goretti High School

The Harriet & Paul Muldowney Scholarship
Endowment Fund

The John H. Munday, Jr. Memorial
Scholarship Fund

The St. Maria Goretti High School
Endowment Fund

St. Mary's Schools, Annapolis

Ford and Patricia Rowan Endowment Fund

The Carmine Blades Scholarship Fund

The Caruso Family Scholarship Fund

The CMDR Albert W. Vittek Endowment Fund

The Father Max Pauli C.Ss.R. Scholarship Fund

The J. Pierre and Sybil Bernard
Scholarship Fund

The Jeffrey D. Ralston '84 Scholarship Fund

The Letitia Farrell Memorial Scholarship Fund

The McGeady Family Scholarship Fund

The Mildred Pascal Scholarship Fund

The Mustard Seed Tuition Assistance Endowment
Fund for St. Mary's High School and St. Mary's
Elementary School

The Richard D. Crabtree Spirituality
Scholarship Fund

The School Sisters of Notre Dame Mathematics
Award Fund

The St. Mary Faculty Enrichment
Endowment Fund

The St. Mary High School Endowment Fund of the
St. Mary's Schools Endowment Fund of
St. Mary's Annapolis

The St. Mary's Schools Endowment Subfund of
the St. Mary's Annapolis Parish Endowment Fund

The Tuition and Scholarship Assistance Subfund
of the St. Mary's Annapolis Parish
Endowment Fund

The Twila Steinecker Peace and Justice
Award Fund

St. Mary's School, Hagerstown

The Reverend Monsignor Robert S. Passarelli
Endowment Fund

The St. Mary Catholic School, Hagerstown
Endowment Fund



St. Michael - St. Clement Catholic School

Daughters of Charity Endowment Fund for St. Michael's School

The Father Christopher Carney Endowment Fund

The Shipley Family Tuition Assistance Endowment Fund

The Spalla - Mancuso Memorial Fund

The St. Clement Mary Hofbauer School Endowment Fund

The St. Michael the Archangel Educational Endowment Fund

St. Philip Neri School

The Reverend Monsignor Francis X. Zorbach Tuition Assistance Endowment Fund

St. Pius X School

The Griffith Fund for Human Potential

The Mark Pacione School Endowment Fund

The St. Pius X School Endowment Fund

St. Ursula School

The Sister Joan Kelly St. Ursula School Fund

Trinity School

The Levy Family Endowment Fund

The Trinity School Endowment Fund

The Trinity School Mustard Seed Endowment Fund

The William and Catherine Bauer Endowment Fund

Tuition Assistance - General

AOB Endowment for Educational Excellence

Embracing Our Mission School Fund

Ford and Patricia Rowan Endowment Fund

The Anna Fehl Scholarship Endowment Fund

The Archdiocese of Baltimore Endowment for Educational Excellence

The Betty Wagner Smith Scholarship Endowment Fund

The Bishop William C. Newman Scholarship Fund

The Brian and Mary Jo Rogers Endowment Fund

The Cardinal Edwin F. O'Brien Endowment Fund

The Carolyn and Blair Donohue Family Endowment Fund

The Catholic Business Network of Baltimore Scholars Endowment Fund

The Charles and Mildred Foley Memorial Endowment Trust Fund



The Community Schools of Baltimore City Tuition Assistance Fund

The Davis Family Endowment Fund

The Dr. Ronald J. Valenti Catholic School Scholarship Endowment Fund

The Eileen Flanigan Serene Trust Fund

The Francis A. and Betty J. Contino Tuition Assistance Fund

The G.B. Charities, Inc. Endowment for Calvert Hall College High School

The G.B. Charities, Inc. Endowment for Cristo Rey Jesuit High School

The G.B. Charities, Inc. Endowment for Loyola Blakefield

The G.B. Charities, Inc. Endowment for Maryvale Preparatory

The G.B. Charities, Inc. Endowment for Notre Dame Preparatory

The GB Charities, Inc. Endowment Fund for St. Ignatius Loyola Academy

The George and Margaret McManus Family Trust Fund

The Germaine and David Ricker Endowment Fund*

The J. Bernard and Marie Rafferty Family Fund

The James and Darlene Stojak Family Trust Fund

The Jeanne & Michael Sullivan Family Trust Fund

The Julia Sullivan Endowment Fund

The Kinkopf Family Fund for Catholic Schools

The Laurence E. Harrison, Jr. Endowed Scholarship Fund

The Lawrence Cardinal Shehan Scholarship Fund

The Mary and Nicholas Mangione Family Trust Fund*

The Mary Heckwolf Staylor Endowment Fund

The Mary Margaret Winner Music Scholarship Endowment Fund

The Mathias J. & Rosetta K. DeVito Family Fund

The Michael and Jean MacDonald Endowment Fund

The Our Lady of the Angels Catholic Education Scholars

The President's Fund*

The Posner Family Endowment Fund

The Q. Francis and Rita H. Dallavalle Endowment Fund

The Roskopf Family Memorial Endowment Fund

The Seton Alumnae Association Scholarship Endowment Fund

The Seton Keough High School Endowment Fund

The St. Ann, Hagerstown Tuition Assistance Fund

The St. Luke Education Endowment Fund

The Timothy J. and Leslie Chairs Family Fund*

**Fund supports multiple purposes*



ENDOWMENTS

Clergy Endowment Funds



\$89,739,188
Total Endowment Funds



513
Total Funds
29
Clergy Funds

“That God could choose a man like me to be used as His instrument is both humbling and beautiful. I truly see the priesthood, my vocation, as the fulfillment of the inner longings of my person, and my means to salvation.”

— Braden Lynch, Seminarian

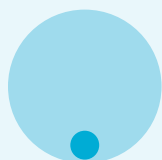
- The Albert Gregory Kelly Endowment Fund
- The Alice Creaghan Streett Endowment Fund
- The Andrew J. and Dolores M. Bozzelli Family Endowment Fund
- The B. Larry and Catherine H. Jenkins Family Trust Fund
- The Baird Family Endowment Fund in Honor of Cardinal Shehan
- The Bill and Lisa Stromberg Endowment for Tuition Assistance and Seminarian Education*
- The Bishop William C. Newman Fund
- The Burke-Healy Family Trust Fund
- The Corriere Family Endowment Fund
- The David and Hilda Aland Family Fund
- The Deacon Endowment Fund
- The Frank Faimann Family Fund
- The Germaine and David Ricker Endowment Fund*
- The Joseph E. Kreft, Sr. Family Charitable Fund for Seminarian Education
- The Lloyd E. & M. Agatha Aiken Endowment Fund*
- The Murphy-Faulstich Endowment Fund*
- The Ongoing Formation and Continuing Education Endowment Fund for Priests
- The Reverend Christopher M. Carney Endowment Fund*
- The Reverend Joseph L. McManus Endowment Fund
- The Reverend Monsignor Alfred E. Smith Endowment Fund*
- The Reverend Monsignor Clare J. O'Dwyer Endowment Fund
- The Reverend Monsignor Daniel McGrath Endowment Fund
- The Reverend Monsignor Paul G. Cook Fund
- The Reverend Monsignor Richard E. Parks Endowment for Seminarian Education
- The Reverend Monsignor Robert A. Armstrong Endowment Fund
- The Reverend Patrick M. Carrion Endowment Fund for the Advancement of Ongoing Formation for Deacons
- The Smith & Wendelken Family Endowment Fund
- The Special Care Endowment Fund for Priests
- The St. John Vianney Seminarian Fund

**Fund supports multiple purposes*



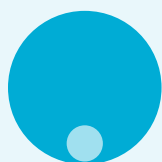
ENDOWMENTS

Ministry & Outreach Endowment Funds



\$89,739,188
Total Endowment Funds

\$7,210,066
for Ministry & Outreach



513
Total Funds

43
Ministry & Outreach Funds



Apostleship of the Sea

The Monsignor FitzGerald Fund for the Apostleship of the Sea

Archdiocese of Baltimore (General)

AOB Communications Fund

The Fenwick Family Charitable Fund*

The Founder's Fund

The Premier See Endowment Fund

The Reverend Edward Sargus Endowment Fund

The Samuel W. and Denise Chairs Family Fund

The St. Francis of Assisi Fund

The William & Mabel Newman Family Fund

Black Catholic Ministry

The Black and Indian Missions Endowment Fund

Catholic Charities

The Carrion and Flahavan Family Fund for Our Daily Bread

The Christopher and Karen Deaver Family Fund*

The Cultural Endowment Fund for Seniors

The Denise R. Fitzgerald Endowment Fund

The Ethan C. Flint Endowment Fund for Children and Family Services

The Jean and Michael Sullivan Endowment Fund

The Kinkopf Family Fund for Catholic Charities

The Mary T. Plunkett Endowment Fund

The Reverend Monsignor John J. Auer Fund

The Russell L. Shipley, Jr. and Sharon E. Shipley Endowment Fund

The Thomas M. and Mary Chairs Family Fund*

The Truman T. and Nellie M. Semans Endowment for Catholic Charities

Catholic Relief Services

The Christopher and Karen Deaver Family Fund*

The Thomas M. and Mary Chairs Family Fund*

Disabilities Ministry

The Francis J. Rasmus, Jr. Endowment Fund

The In My Father's House Endowment for Disabilities Ministry

The Jacqueline and Miranda Markart Endowment Fund

Haiti Mission

The Delss Fund for Catholic Education in Haiti

The Gerard D. and Teresa L. O'Neill Family Fund

The Leo W. Rader Family Endowment Fund

The Mortel Family Fund for Haiti

Hispanic Ministries

The Our Lady of Guadalupe Endowment Fund

International Missions

The Mission Endowment Fund

Mercy Medical Center

The Pamela J. Norbeck Fund

Office of Respect Life

The Dr. Ellen Yankellow and William Chapman Endowment Fund

The Holy Innocents Endowment for Burial upon a Miscarriage

P. Francis Murphy Initiative for Justice and Peace

The Bishop P. Francis Murphy Justice and Peace Fund

Retired Religious

The Germaine and David Ricker Endowment Fund*

The Kathryn Chairs Endowment Fund

St. Anthony Place

The Balch Family Endowment Fund for St. Anthony Place

St. Vincent de Paul Society

The Todd and Annemarie Chairs Family Fund

Xaverian Brothers

The Xaverian Brothers Endowment Fund

Other

The Catholic Chaplaincy Endowment for MedStar Franklin Square Medical Center

The James and Barbara Jacobs Endowment Fund

The Mary and Nicholas Mangione Family Trust Fund*

The President's Fund*

The Reverend Philip T. Snouffer Endowment Fund*

**Fund supports multiple purposes*



ENDOWMENTS

Cemetery Endowment Funds



\$89,739,188
Total Endowment Funds



\$4,006,007
for Cemetery

513
Total Funds

29
Cemetery Funds

Archdiocese of Baltimore

The Archdiocese of Baltimore Cemetery Fund

Catholic Community of Ascension & St. Augustine

The St. Augustine, Elkridge Cemetery Endowment Fund

Catholic Community of South Baltimore

The Holy Cross Cemetery Endowment Fund

Divine Mercy Parish

The St. Mary, Lonaconing Cemetery Fund

The St. Michael, Frostburg Cemetery Endowment Fund

Holy Family, Randallstown

The Holy Family Historic Preservation & Cemetery Endowment Fund

Holy Rosary

The Holy Rosary Cemetery Endowment Fund

Our Lady of Mount Carmel, Thurmont

The Our Lady of Mount Carmel, Thurmont Cemetery Endowment

Our Lady of the Fields

The Our Lady of the Fields Cemetery Endowment Fund

Our Lady of the Mountains

The Our Lady of the Mountains Perpetual Care Endowment Fund

St. Alphonsus Rodriguez

The St. Alphonsus Rodriguez Parish Cemetery Endowment Fund

St. Augustine, Williamsport

The St. Augustine's, Williamsport Cemetery Endowment Fund

St. Bartholomew

The St. Bartholomew Cemetery Endowment Fund

St. Charles Borromeo

The St. Charles Borromeo Cemetery Endowment Fund

St. Ignatius, Hickory

The Rev. Christopher M. Carney Endowment Fund*

The St. Ignatius Parish Cemetery Endowment Fund

St. John the Evangelist, Long Green Valley

The St. John the Evangelist's, Long Green Valley Cemetery Endowment Fund

St. John, Westminster

The St. John, Westminster Cemetery Endowment Fund

St. Joseph, Emmitsburg

The St. Joseph, Emmitsburg Cemetery Endowment Fund

St. Joseph, Texas

The St. Joseph, Texas Cemetery Endowment Fund

St. Louis

The St. Louis Parish Cemetery Endowment Fund

St. Mary of the Assumption, Govans

St. Mary of the Assumption, Govans Perpetual Care Cemetery Fund

St. Mary, Pylesville

The St. Mary, Pylesville Cemetery Endowment Fund

St. Michael, Poplar Springs

The Bill & Inez Thomas Endowment Fund

The Earl Henderson Endowment Fund for Cemetery Care

St. Patrick, Havre de Grace

The St. Patrick's, Havre de Grace Perpetual Care Cemetery Fund

St. Peter, Hancock

The St. Peter, Hancock & St. Patrick, Little Orleans Cemetery Fund

St. Vincent de Paul

The St. Vincent de Paul Parish Cemetery Perpetual Fund

Transfiguration Catholic Community

St. Peter's Cemetery Endowment Fund

**Fund supports multiple purposes*



Donor Advised Funds

Philanthropists who establish a donor advised fund (DAF) with the Catholic Community Foundation do so for the ease and flexibility this popular charitable giving option offers. Donors make an initial tax-deductible gift of \$10,000 or more in cash or securities to the Foundation, and the Foundation establishes a DAF named by the donor that will be held under the Foundation's management. Once the DAF is established, the donor can begin to make recommendations for grant distributions to qualified charitable organizations* that, upon review and approval, the Catholic Community Foundation awards in the donor's name.

At the end of Fiscal Year 2019, the Catholic Community Foundation held nine DAFs under management, representing \$1,133,626 in assets.

If you are interested in learning more about establishing a DAF with the Catholic Community Foundation, please call us at 410-547-5356.

* The charitable organization recipient must be in good standing with the IRS as a 501(c)(3) organization. Please also note that at least 50% of a DAF's distributions must be in support of archdiocesan programs.



Photo courtesy of Resurrection-St. Paul School

“Now to Him who is able to accomplish far more than all we ask or imagine, by the power at work within us, to Him be glory in the Church and in Christ Jesus to all generations, forever and ever. Amen.”

Ephesians 3:20-21



Legacy League



Donors who wish to extend the benefits of their generosity beyond their lifetimes choose the Catholic Community Foundation's Legacy League as the vehicle

for their planned giving. By endowing legacy gifts (estate gifts, charitable gift annuities, trusts, etc.), Legacy League members may receive a tax benefit or other financial

incentive while helping to ensure that their support for a cherished parish, school, ministry, or a combination of these, can continue in perpetuity.

The Foundation is grateful for the opportunity to acknowledge these farseeing philanthropists here:

Please note: the † symbol denotes a member who is deceased.

John and Diana Ackermann	Jean Berdini†	Frank and Margaret Bramble	Jim Christ
Reverend Monsignor Lloyd Aiken†	Richard Berger	Barbara Bristow	Natalie Chu
David and Kathy Airel	Daniel and Barbara Bevans	Norma Brough	Rosemary Ciaudelli-Grace
David and Hilda† Aland	John and Donna Bidinger	Anthony and Alisa Brown	Joseph and Audrey Cimino
Philip and Mary Altomare	Joan Bildstein	Mary Brown	Frank and Vincenza Cina
Reverend Monsignor Nicholas Amato	Donna Binney	Sibyl Brown†	Dorothy Clark
Earl and To Hyang Anderson	Drusilla Blackburn	Roy† and Karin Bryan	John and Marion Coccagna
Penny Anderson	Thelma Blair	Madeline Buchanan	Alfred Coleman†
Naomi Angert†	Dorothy Blake†	Jeff Bunn	Thomas† and Margaret Collins
Reverend Monsignor	Milan† and Christa Blake	Mary Frances Healy Burke†	Robert and Mary Comer
Robert Armstrong†	Russell and Connie Bly	Paul and Marjorie† Burke	Jack and Marge Conley
Ralph and Christine Arnold	Gary and Deb Bockrath	Helen Burns†	Marvin Connell†
Reverend Monsignor John Auer	Andrew† and Deborah Bohle	Paul and Sheila Buscemi	Francis and Betty Contino
Raymond and Patricia Bahr	John† and Ida Bohli	Glenn Byrd	Reverend Monsignor Paul G. Cook
Betty Bailey†	Philip† and Gloria† Bolger	Reverend Francis X. Callahan†	Dominic† and Concetta Corriere
Kenneth† and Gloria Bailey	Robert Bolger	Thomas and Brenda Callahan	Miguel Cortes
John and Roslyn Balch	Eleanor Bollinger	Joan Canapp	Jack and Kathryn Costa
Tom† and Peggy Baldwin	John Bonner	Ned and Maura Cannon	Sally Costanzo
Charles† and Patricia† Bangert	Mary Agnes Bordas	Bryan and Anne Carney	Dominic and Kathleen Cottone
Marion† and Rose† Banz	Most Reverend William Borders†	Reverend Christopher Carney†	Reverend Monsignor
Robert and Sadj Bartolo	Robert† and Elizabeth Bosley	Gloria Carpeneto	Richard Cramblitt
Michael and Patricia Batza	Andrea Bowden	Reverend Patrick Carrion	Lois Cross†
Joseph Bauernfeind†	Howard and Virginia Bowen	Garcia Castillo	David and Diane Cushwa
Charles† and Patricia Baynes	Alan and Laure Bowman	James and Gertrude Cavanaugh	Charles† and Barbara† Czapar
Bettie Beauchamp	Lambert and Forest Boyce	Samuel Chairs, Jr.	Paul and Mary Dallavalle
Andrew and Barbara Becker	Michael and Connie Boyer	Frances Chapman†	Owen† and Marian† Daly
Annette Bell	John and Nancy Boyle	William Chapman and	Donald and Jane Dean
James and Rosemary† Belson	George† and Helen† Bozek	Ellen Yankellow	Christopher and Karen Deaver
Frank† and Lanita Bennett	Reverend Monsignor Robert Bozel†	Jamie and Lonnie Chilcoat	Jacques and Gail Delente
Glenn and Dawn Bensley	Andrew† and Dolores† Bozzelli	Elizabeth Childress	Margaret Dell†

Charles and Carol Ann Delss	William [†] and Joyce Gillen-Kenney	Russell [†] and Beverly Kott	Reverend C. Lou Martin
Theresa DeLuca [†]	Kenneth and Kimberly Gontasz	Walter and Veronica Kovalchek	Grover Martin
Reverend Martin Demek	Joseph Grabenstein	Stephen and Judith Kowalski	Ronald and Virginia [†] Mason
Elizabeth Dettor [†]	Charles [†] and Phyllis [†] Groh	Rita Kozub [†]	Elizabeth Mathias [†]
Charles [†] and Elizabeth [†] Devaud	Steve and Irma Gurbisz	Christine Kraus	Michael and Christina Mayhew
Matthias [†] and Rosetta DeVito	Walter J. Hackett, Jr. [†]	Jeniffer Kraus	Steven and Margaret Mays
Donald DiBlasi	Catherine Hagan [†]	Eva Kukla	Robert and Lynda McArthur
E. Alexander Dietrich [†]	Jeanne Hagar [†]	Reverend Henry Kunkel	Calvert [†] and Grace [†] McCabe
Charles Diggs	Donald and Elaine Hagner	James and Sharon Kurdziel	Marie McCarthy
Reverend Thomas Donaghy [†]	Olive Hall	Charles and Eileen Lacijan	John McDade
Blair [†] and Carolyn Donohue	Mary Halpin	John and Virginia Lackay	Theresa McDonald
Dorothy Donovan [†]	Doris Harju [†]	Robert and Nancy Landsman	Eamonn and Patrice McGeady
Leonard and Elizabeth Doran	Mary Harper	Florian and Marguerite Lane	Patricia McGhee [†]
Raymond Durante	Cheryl Harrison	John and Carole Langmead	Doug and Pam McGinnis
Robert-Philip Dyson	Edith Harrison	Leon [†] and Joanne LaPorte	Reverend Monsignor
James and Alyce Edwards	Michael [†] and Rebecca Hart	Ruth Larkin	James McGovern [†]
Ernesto and Susana Escola	Bruce and Georgia Harvey	Reverend Leo Larrivee, P.S.S.	Robert and Mary McGraw
Anna Esposito [†]	Bernard and Linda Hayes	Alma Laufert	John McKenna
Catherine Etchison	Mary Heath [†]	Albert Laun [†]	David [†] and Mary McKinnon
Frank Faimann [†]	Raymond and Marcia Heil	Timothy and Tracy LaValle	Bette McKown
Barbara Falco	Earl Henderson	Timothy and Eileen Leahy	George [†] and Margaret [†] McManus
Rose Faulhaber	Michael and Veronica Herrera	Gi Nyeong Lee	James [†] and Margaret [†] McManus
Richard Faulstich [†]	Larry Higdon [†]	Leslie [†] and Sally Lee	Jerome [†] and Mary McManus
John Feller	Barbara Higgins	Micheline Lemon	Lucille McMeins
Pauline Fendlay	George and Cecelia [†] Hinkel	Timothy [†] and Ellen Lesniewski	Bernard and Joan Meagher
Charles and Elizabeth Fenwick	William [†] and Arlene Hoffman	Frank Lewis [†]	Mel Meid
Rose Ferrandi	Kenneth Hollar	Richard [†] and Angela [†] Lidinsky	Joseph Metz
Louise Fidell	Dorothy M. Holtzman [†]	Ann Lindblade	Ronald Meyers
Daniel Finkelstein	Drew and Risa Hudson	Earl and Darielle Linehan	Anthony and Kathleen Mignini
Denise Fitzgerald [†]	Carrie Hughes	Jo Ann Lingner	Kathryn Mike
Reverend Monsignor	Joseph [†] and Joan Imrisek	Robert [†] and Karen Liskey	Brian and Mary Kay Miller
John Fitzgerald	Garrett Isacco	Anita Liu	Ramona Minaya
Pierce [†] and Mary Ann [†] Flanigan	Delores Jackson	Reverend Joseph Lazor	Marjorie Morel
Ethan Flint	Charles and Clare Jednorski	Joan Loughlin	George and Pat Morgan
Paul Flynn	B. L. and Catherine Jenkins	Reverend Monsignor Joseph Luca	Rowland [†] and Mary Morrow
Charles [†] and Neta Foley	Lillian Jenkins	Andrea Luchini	Michael and Mary Beth Morsberger
Reverend William P. Foley	William Johnson [†]	Linda Ann Luckhardt [†]	Antoinette Moya
Reverend Gerard Francik	Robert Kane	Reverend Monsignor Edward Lynch [†]	John Mueller [†]
George [†] and Mary Catherine [†] Frank	Deacon Sean and Sheri Keller	Bradley [†] and Shirley MacDonald	Paul and Harriet Muldowney
Albert and Karen Fritz	Mary Kelley	Michael and Jean MacDonald	Thomas and Mary Mullan
Richard and Lori Froderman	Douglas and Mary Anne Kennedy	George Madara [†]	Andrew and Judy Mullen
Andres and Julia Fuentes	Sean Kennedy	Mary Magnoni	Margaret Mulligan
Emmett and Audrey [†] Full	Guy [†] and Joyce Kerlin	Briccio Malilay [†]	Scott and Linda Murphy
Herb and Joan Gampel	Thomas and Anna Kilduff	David Malone	Calvin Murray [†]
James and Mary Jane [†] Gardner	Kenneth Kinzler	Most Reverend W. Francis Malooly	Donald Murray [†]
Avon and Jeanette Garrett	John Kirby	Robert Mamone	Leonarda Murray
Barbara Gaver	Trafford [†] and Isabel [†] Klots	Nicholas [†] and Mary Mangione	Michael and Kathleen Murray
Jerome [†] and Mary [†] Geckle	Edward and Kathleen Knutson	Joseph and Rika Mansueto	Robert and Beverly Nedd
Keith and Mary Ann Gehle	Juliana Kopec	Vincent and Angela Marcellino	Catherine Neel [†]
Charles [†] and Patricia Gellner	Alexandra Kopeck	Jacqueline and Miranda Markart	Most Reverend William C. Newman [†]
Francis [†] and Carolyn [†] Gibbons	David Kording	Roger and Kathleen Marsh	Thomas and Agnes Nibali

Legacy League

Perry and Berndette Nwanguma	Henry Reinhardt	Reverend Monsignor Alfred E. Smith†	Reverend Monsignor
Edward and Karen O'Connor	Barbara Reynolds	Donald and Carole Smith	Arthur Valenzano†
Walter Oduya	Gerald and Jeanne Reynolds	Gary and Maggie Smith	Ernestine Valenzano†
Josephine Offutt†	Lawrence and Leiloni Reynolds	Joseph and Kathy Smith	Theresa Vance†
Mary Olert	Brian and Suzanna Ribblett	R. Douglas† and Pamela Smith	Raul and Gladys Velez
Richard† and Elsie† Orburn	David and Rita Ricker	Richard† and Betty† Smith	Maxine Verdier†
Michael and Colleen Oster	Robert Riley	Thomas and Joanne Smith	Jem and Gabriela Villanueva
Dorothy Palasik	Timothy† and Barbara Riley	Stephen and JoAnn Sneeringer	Albert† and Mary† Vittek
Lorraine Palasik†	Eugene and Susan Ringsdorf	Reverend Philip Snouffer	Raymond Vrablic†
Donna and Gary† Papuchis	Brian and Louisa Rink	Alfred Sorbello	Betty Wachs
Elissa Passalacqua	James and Carol Ritz	Jean Southard	Annabelle Wagner†
Reverend Monsignor	Robert Robinson	Thomas and Amy Spangenberg	Mark and Lisa Wagner
Robert Passarelli†	George† and Rita† Rehak Roettger	Joseph† and Bernice† Spillman	Mary Cecelia Walsh
Ajay and Mary Patil	Brian and Mary Jo Rogers	Brian and Carolan Stansky	Richard Walters & Family
Malvin and Jan Pavik	John and Audrey Rogers	James Stasiowski	Patrick and Jacqueline Ward
Gerald and Linda Pech	Robert and Eleanor† Romadka	Ralph and Elinor Steinitz	Ray and Miriam† Watson
Dominick† and Kathleen Perini	Reverend Alphonse Rose†	James and Darlene Stojak	Reverend Lawrence Waudby
Reverend Monsignor Hugh Phillips†	Edda Rosskopf	William and Marguerite Strobel	Daniel and Michelle Webster
Joseph Phillips	Ford and True Rowan	Glenn Strohm and	Reverend Gerald West†
Felgie Pippi†	Elizabeth Rudy†	Susan Levy-Strohm	Arthur† and Margaret† Wheeler
Raynard Pinckney	Jo Anne Sabas	William and Lisa Stromberg	Kevin and Jessica Whitfield
Margaret Polley	Stephen and Julia† Sadler	Mary Lou Stromer	Van† and Sarah† Whiting
Thomas and Elizabeth Poole	Patricia Sahlin	Michael and Jean Sullivan	Richard and Barbara Williams
Alberta Porter	Lawrence† and Eleanor† Salfner	Mary Elizabeth Sweeney†	Reverend Paul Witthauer
John Poyer, III and	Henry Sanborn†	James and Mary Szivos	Leo† and Gloria† Woerner
Theresa Archambault	Helen Santoni	Sushila Thapa	Arthur and Angela Wolf
E. Carole Pritchett	Reverend Monsignor	Janet Thomas†	Beatrice Wolf
Joseph† and Elizabeth† Prosser	Kevin Schenning	Mary Inez Thomas	Reverend Monsignor Richard Woy
Susan Pulsifer	Pamela Schettler	Reverend Paul Thomas	John† and Dolores† Wright
Gulam and Brigitta Puthawala	John and Deborah Schiavone	Joan Thompson	Barbara Jo Wuest
William and Mary Ann Quarles	Truman and Nellie† Semans	Kenneth and Kathi Thompson	Otto Wuest†
Reverend Brian Rafferty	Renee Shackelford	Nancy Lee Thompson†	Elva Yamartino
Randy† and Margaret Rager	Theresa Shaffer	Joseph and Christine P. Tischer	Gi Nyeong Yi
Rita Ralston	Luke Shaw	Robert and Evelyn† Torr	Shirley Young
Lazaro and Edna Ramos	Russell and Sharon Shipley	Dorothy Towner†	Steven Zabicki†
James and Mary Randisi	Artin and Colette Shoukas	Marvin and Margaret Trott	Edward and Theresa Zanowicz
Francis Rasmus	Reverend Joseph Simmons	Adam and Hathu Truong	Matthew and Kendra Zeller
Charles Reeves†	Joseph† and Marie Simon	Dorothy Turek†	Reverend Monsignor
Albert and Loretta Reichelt	Fred Singletary	Gregory and Amy Vaillancourt	Francis X. Zorbach†
Donald and Mildred Reinhart	Charles and Carolyn Slimowicz		

Though we at the Foundation have tried our best to include the names of all of our legacy givers above, it is possible that we have inadvertently omitted you. If your name does not appear above, and you intend to remember the Archdiocese of Baltimore or the Foundation in your estate plans, please contact us at 410-547-5356, so that we can begin the process of formally welcoming you into the Legacy League. Please reach out to us as well if you (or someone you know) is considering making a bequest or learning more about the Legacy League.



ABOUT THE FOUNDATION

Leadership

Board of Trustees

Most Reverend William E. Lori

*Chairman
Catholic Community Foundation
Archbishop of Baltimore*

Mr. John H. Balch, RPh

*President
Catholic Community Foundation
Chair, Nominating Committee
CEO/President, The PharmaCare Network*

Mr. William Purnell, CPA

*Treasurer, Catholic Community Foundation
Chair, Audit & Finance Committee
Partner, KPMG*

Mr. Francis A. Contino

*Board of Trustees
Managing Director, FAC&B, LLC*

Mr. Glenn M. Falcao

*Board of Trustees
Chair, Strategic Marketing Committee
Owner and Managing Director
Falcao Investment Group*

Mr. James A. Hamilton, CPA

*Board of Trustees
Chair, Distribution Committee
Audit & Finance Committee
Owner & Managing Director
David-James, LLC*

Reverend Monsignor

Richard B. Hilgartner, Jr.

*Board of Trustees
Pastor
St. Joseph, Cockeysville*

Mr. David Kinkopf, Esq.

*Board of Trustees
Audit & Finance Committee
Attorney at Law, Partner
Gallagher Evelius & Jones LLP*

Mr. Brian Kroneberger, CFP®

*Board of Trustees
Managing Director – Financial Advisor
RBC Wealth Management
The Dyer Kroneberger Group*

Mr. Steve Linhard

*Board of Trustees
Chair, Investment Committee
Chief Operating and Financial Officer
Chesapeake Medical Imaging*

Most Reverend Adam J. Parker

*Ex-Officio
Board of Trustees
Auxiliary Bishop & Vicar General
Archdiocese of Baltimore*

Mrs. Elaine Pevenstein

*Board of Trustees
Strategic Marketing Committee
Principal
Princeville Partners LLC*

Mr. James Randisi

*Board of Trustees
Distribution Committee
President
Randisi & Associates, Inc.*

Mr. James B. Sellinger, Sr.

*Board of Trustees
Chancellor, Catholic Schools
Archdiocese of Baltimore*

Mr. John E. Wheeler, Jr., MBA, CPA

Retired

Dr. Ellen H. Yankellow, PharmD

*Board of Trustees
Distribution Committee
President & CEO
Correct Rx Pharmacy Services, Inc.*

Mr. Patrick Madden*

*Ex-Officio
Executive Director,
Catholic Community Foundation
Executive Director,
Department of Development
Archdiocese of Baltimore*

* Staff of the Foundation

Audit & Finance Committee

Mr. William Purnell, CPA, Chair

*Partner
KPMG*

Mr. James A. Hamilton, CPA

*Owner & Managing Director
David-James, LLC*

Mr. David Kinkopf, Esq.

*Attorney at Law, Partner
Gallagher Evelius & Jones LLP*

Mr. Greg Schuessler, CPA

*Chief Financial Officer
Mission BBQ*

Mr. John E. Wheeler, Jr., MBA, CPA

Retired



ABOUT THE FOUNDATION

Leadership

Distribution Committee

Mr. James A. Hamilton, CPA, Chair
Owner & Managing Director
David-James, LLC

Mrs. Linda Mangione Licata
Mangione Family Enterprises

Mr. James Randisi
President
Randisi & Associates, Inc.

Dr. Ellen H. Yankellow, PharmD
President & CEO
Correct Rx Pharmacy Services, Inc.

Investment Committee

Mr. Steve Linhard, Chair
Chief Operating and Financial Officer
Chesapeake Medical Imaging

Mr. Frank Dingle, CFP®
Senior Vice President – Financial Advisor, Senior
Consulting Group
The Brinton Dingle Wealth Management Group

Mr. James Dugan, CFA
Portfolio Manager
Brown Advisory

Mr. Mark A. Fitz-Patrick, CFP®, CPM®
Vice President
Wealth Management Advisor
Retirement Accredited Financial Advisor
The Fitz-Patrick Wealth Management Group
Merrill Lynch, Pierce, Fenner & Smith Inc.

Mr. Russell LaGreca, CFP®, CRPS®
Vice President, Institutional Consultant
The J.K. Meek Group at Graystone Consulting,
a Business of Morgan Stanley

Mr. Scott G. McRoy, CFP®, CRPC®, CDFA™
Senior Vice President – Wealth Management
Wealth Management Advisor
CAM & Associates
Merrill Lynch, Pierce, Fenner & Smith Inc.

Strategic Marketing Committee

Mr. Glenn M. Falcao, Chair
Owner and Managing Director
Falcao Investment Group

Reverend Patrick M. Carrion
Pastor
St. Bernadette

Mr. John Kelly
Director, Strategic Planning &
Marketing Research
Medifast, Inc.

Mrs. Elaine Pevenstein
Principal
Princeville Partners, LLC

Mr. Greg Pierce
President & Managing Partner
SPARKS! Marketing Communications

Contact Us

Patrick Madden
Executive Director
PMadden@Archbalt.org
410-547-5381

Teresa Brashears
Senior Director of Stewardship
and Administration
Terry.Brashears@Archbalt.org
410-547-5557

Robert Barron
Senior Financial Analyst
Robert.Barron@Archbalt.org
410-547-5323

Schattakka Dennis
Manager
Schattakka.Dennis@Archbalt.org
410-547-5356

Catholic Community Foundation
320 Cathedral Street, 4th Floor
Baltimore, MD 21201

CatholicCommunityFoundation@Archbalt.org
www.ccfdm.org

*The Catholic Community Foundation is a separately incorporated and controlled 501(c)(3) organization within the Archdiocese of Baltimore.
The Foundation's federal tax identification number is 56-2401335.*

All photography, unless otherwise specified: copyright Catholic Review Media. Used with permission.





CATHOLIC COMMUNITY FOUNDATION
ARCHDIOCESE OF BALTIMORE
Share Your Blessings. Sustain Our Faith.

320 Cathedral Street, 4th Floor
Baltimore, MD 21201

CatholicCommunityFoundation@Archbalt.org
www.ccfmd.org